

## Self - Shielded Flux Cored Wire For Hardfacing KJTUBO - 456

### Standard

DIN 8555 (MF 10 - 65 - GR)

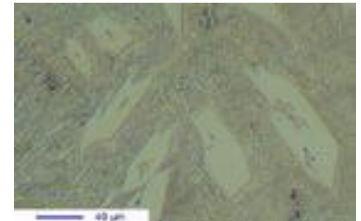
DIN EN 14700 (T Fe 15 - 65 - GC)

### Typical All – Welded Metal Analysis (weight %)

Self - Shielded	C	Si	Mn	Cr
KJTUBO - 456	5- 5.5	1.0 - 1.3	1.5 – 2.0	30- 32

### Typical Weld Metal Properties

<b>Weld metal hardness</b>	60 – 64 HRC
<b>Machinability</b>	Very hard (Grinding Only )
<b>Microstructure</b>	Primary carbides and M7C3 hypereutectic carbides in austenitic matrix
<b>Abrasive wear resistance</b>	Excellent against minerals



### Packing

250Kgs drum or 15 / 25 Kgs spool/coil, depending on wire size and customer's order

Application	Self-shielded
Diameter (mm)	1.60 – 2.80

### Description

High Chromium – Magnesium alloy designed for resisting high stress grinding abrasion  
Suitable for wear plate, pumps, mixers and feeder screws and fan blades.