

## Self - Shielded Flux Cored Wire For Hardfacing KJTUBO – 455Mo

### Standard

DIN 8555 (MF - 10 -60 - G)

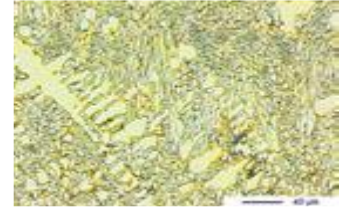
DIN EN 14700 (T Fe15 - 60 -G)

### Typical All – Welded Metal Analysis (weight %)

Self - Shielded	C	Si	Mn	Cr	Mo
KJTUBO – 455Mo	4.7- 5.2	1.0 - 1.3	0.3 – 0.6	27 - 30	1.0- 1.2

### Typical Weld Metal Properties

<b>Weld metal hardness</b>	58 – 61 HRC
<b>Machinability</b>	Very hard (Grinding Only )
<b>Microstructure</b>	Primary carbides and M7C3 eutectic carbides in an austenitic matrix
<b>Abrasive wear resistance</b>	Excellent against minerals



### Packing

250Kgs drum or 15 / 25 Kgs spool/coil, depending on wire size and customer's order

Application	Self-shielded
Diameter (mm)	1.60 – 2.80

### Description

High Chromium alloy designed to resist abrasive wear  
Weld deposit has a higher temperature resistance (up to 450°C) compared with KJTUBO-455.  
Suitable for cladding rollers, coal and cement crushers, wear plate, feeder screws and fan blades.