

## Self - Shielded Flux Cored Wire For Hardfacing KJTUBO - 455

### Standard

DIN 8555 (MF 10 - 60 - GR)

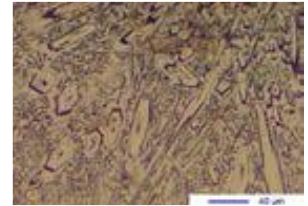
DIN EN 14700 (T Fe 15 - 60 - GC)

### Typical All – Welded Metal Analysis (weight %)

Self - Shielded	C	Si	Mn	Cr	B
KJTUBO - 455	4.7 – 5.2	1.0 - 1.3	0.3– 0.6	27 - 30	+

### Typical Weld Metal Properties

<b>Weld metal hardness</b>	58 – 61 HRC
<b>Machinability</b>	Very hard (Grinding Only)
<b>Microstructure</b>	Primary carbides and M7C3 eutectic carbides in an austenitic matrix
<b>Abrasive wear resistance</b>	Excellent against minerals



### Packing

250Kgs drum or 15 / 25 Kgs spool, depending on wire size and customer's order

Application	Self-shielded
Diameter (mm)	1.60 – 2.80

### Description

High Chromium alloy designed for resisting high stress grinding abrasion  
Suitable for wear plate, pumps, mixers and feeder screws