

Self - Shielded Flux Cored Wire For Hardfacing KJTUBO – 443T

Standard

DIN 8555 (MF - 10 - 60 - GT)

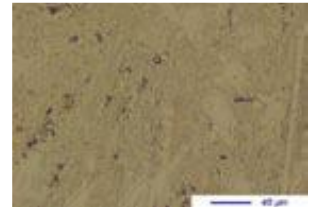
DIN EN 14700 (TFe15 - 60 - G)

Typical All – Welded Metal Analysis (weight %)

Self - Shielded	C	Si	Mn	Cr	Mo	Ni	B
KJTUBO – 443T	4.5 - 5.0	1.2 - 1.5	0.2-0.3	28 - 30	2.7 - 3.0	2.0 - 2.3	+

Typical Weld Metal Properties

Weld metal hardness	61 – 63 HRC
Machinability	Very hard (Grinding Only)
Microstructure	primary carbides, eutectic carbides and Mo secondary carbide
Abrasive wear resistance	Excellent against minerals



Packing

250Kgs drum or 15 / 25 Kgs spool/coil, depending on wire size and customer's order

Application	Self-shielded
Diameter (mm)	1.60 – 2.80

Description

Chromium- Molybdenum – Nickle alloy designed to resist abrasive wear

The weld deposit of this electrode has a higher temperature resistance (up to 350°C).

Suitable for coating process fan blades at high temperature, exhaust gases, pumps, mixers, feeder screws , anti-wear armor with high working temperature due to the existence of nickel and molybdenum