

Self - Shielded Flux Cored Wire For Hardfacing KJTUBO - 443

Standard

DIN 8555 (MF - 10 - 60 - G)

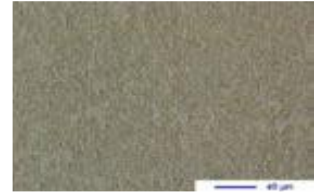
DIN EN 14700 (TFe15 - 60 -G)

Typical All – Welded Metal Analysis (weight %)

Self - Shielded	C	Si	Mn	Cr	Nb	B
KJTUBO - 443	4.8 -5.2	1.2 -1.5	0.2 - 0.3	28 - 30	0.9 -1.1	+

Typical Weld Metal Properties

Weld metal hardness	60 – 63 HRC
Machinability	Very hard (Grinding Only)
Microstructure	Primary carbides and M7C3 eutectic carbides and Nodular niobium carbides in an austenitic matrix
Abrasive wear resistance	Excellent against minerals



Packing

250Kgs drum or 15 / 25 Kgs spool/coil, depending on wire size and customer's order

Application	Self-shielded
Diameter (mm)	1.60 – 2.80

Description

Chromium-Niobium alloy designed to resist abrasive wear

Suitable for Wear plates, pelletizers, excavator scoops, cement and coal industry, crusher hammers